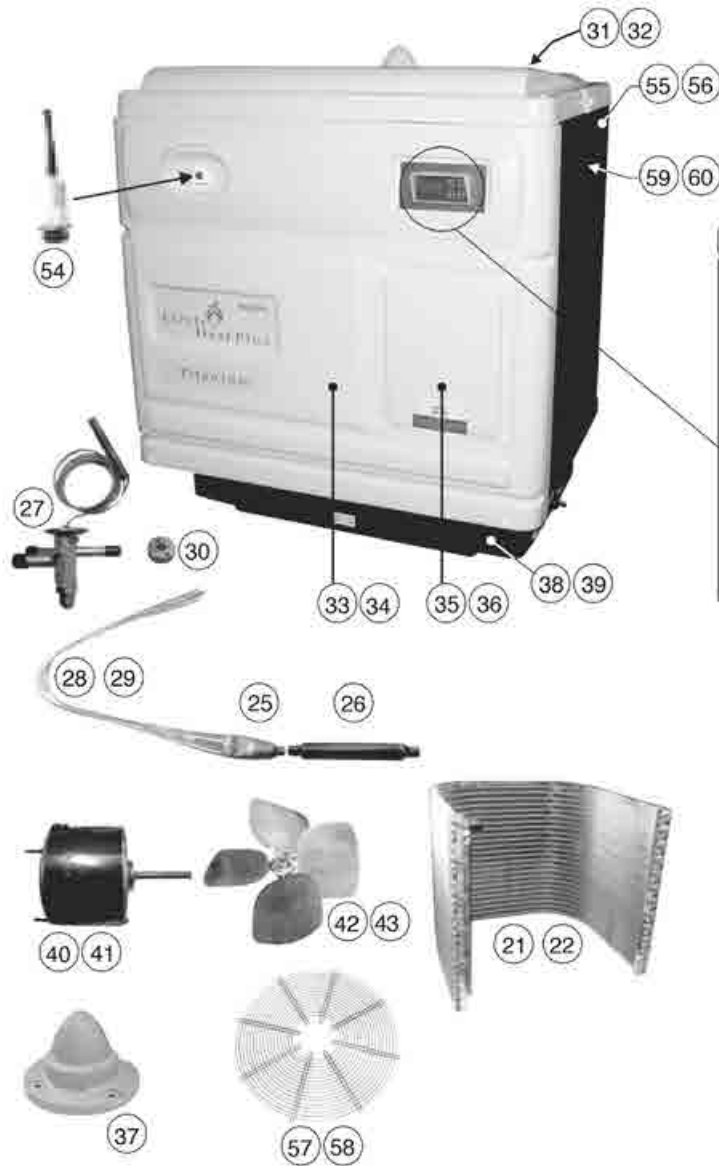


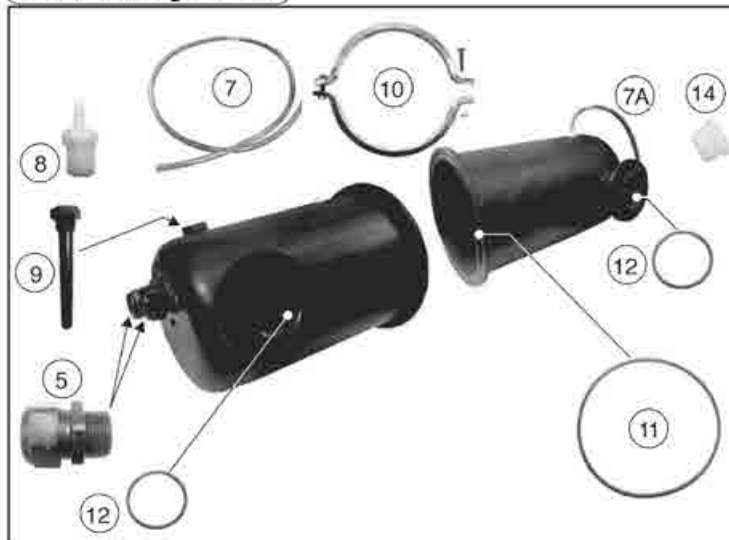
# ELECTROHEAT PLUS MKI Models 85,105,125 150 single and three phase

Part Number	Product Description	Diagram Number
69201300	Liquid Tight Connector 3/4" - 2 required	5
69201306	Nipple 1/8" Barb - 3 required	8
69201319	Thermostat Well 67.5 mm	9
69201320	Thermostat Well O Ring	
69801504	Canister O'Ring 7 1/4"	11
69801505	Water Inlet and Outlet O'Ring - 2 required	12
69801410	Canister Clamp	10
69201303	Clear Plastic Hose 1/8"ID x 1/4"OD (Pressure Switch) - 41" length	7
69201312	Plastic Cap 3/4" NPT - 2 required	14
69051505	Digital Control Assembly	13
69101008SA	Compressor 1 phase (85 model)	20
69101011	Compressor 3 phase (85 model)	20
69101038	Compressor 3 phase (105 model)	20
69101014SA	Compressor 3 phase (125 & 150 models)	20
69101223	Heat Exchanger 24" Assembly complete Titanium (85)	A/B
69051350	Heat Exchanger 28" Assembly complete Titanium (105, 125 & 150)	A/B
69101302	Refrigerant Distributor 3/8" - 6 tubes	25
69101345	Filter/Dryer	26
69101365	Expansion Valve (150 model)	27
69051317	Capillary - 132" (85 model)	28
69051319	Capillary - 240" (105 model)	28
69051320	Capillary - 180" (125 model)	29
69101355	Orifice G6 (150 model)	30
69201500	Fan Motor Protective Cone	37
69301006	Fan Motor 1/6 hp 900/1075 rpm (85)	40
69301004	Fan Motor 1/4 hp 900 rpm (105, 125 & 150)	41
69301106	Fan Blade 20" (85 model)	42
693011061	Fan Blade Plastic 20" (25k)	
69301107	Fan Blade 22" (105, 125, and 150 models)	43
69400001	Transformer 240/24-12V	44
69400002	24V Fan Relay	45
69401002	High Pressure Switch 250-425PSI	46
69401003	Low Pressure Switch 25-50PSI	47
69401005	Defrost Control	48
69401006	Water Pressure Switch	49
69801512	Retaining Ring Pressure Switch	N/S
69401016	24V Time Delay - 3min	50
69501009	Contactactor 40A/24V 3 Poles	51
69501103	Fan Run Capacitor (85 model)	52
69501205	Green Light - 250V - 28" wires	54
69601103	Fan Grill (85 model)	57
69601104	Fan Grill (105, 125, and 150 models)	58

# ELECTROHEAT PLUS MKI Models 85,105,125 150 single and three phase



## Heat Exchanger Parts



## Heat Exchanger Assemblies Complete

